

## Wide-Mouth Bottles

### I. APPLICATIONS

1. Sample storage
2. Dispensing samples

### II. FEATURES

1. Material: Strong, medical-grade polypropylene
2. Autoclavable

### III. DESIGN

1. High purity
2. Superior sealing property
3. Natural or brown color

### IV. DESCRIPTION

Item	Volume	Color	Packaging	Sterile
04-0005	5ml	Natural	2000/Case	No
04-1005	5ml	Brown	2000/Case	No
04-0010	10ml	Natural	1200/Case	No
04-1010	10ml	Brown	1200/Case	No
04-0015	15ml	Natural	1200/Case	No
04-1015	15ml	Brown	1200/Case	No
04-0030	30ml	Natural	800/Case	No
04-1030	30ml	Brown	800/Case	No
04-0060	60ml	Natural	400/Case	No
04-1060	60ml	Brown	400/Case	No
04-0125	125ml	Natural	250/Case	No
04-1125	125ml	Brown	250/Case	No
04-0200	200ml	Natural	200/Case	No
04-1200	200ml	Brown	200/Case	No
04-0250	250ml	Natural	150/Case	No
04-1250	250ml	Brown	150/Case	No
04-0500	500ml	Natural	120/Case	No
04-1500	500ml	Brown	120/Case	No

### V. CERTIFICATION

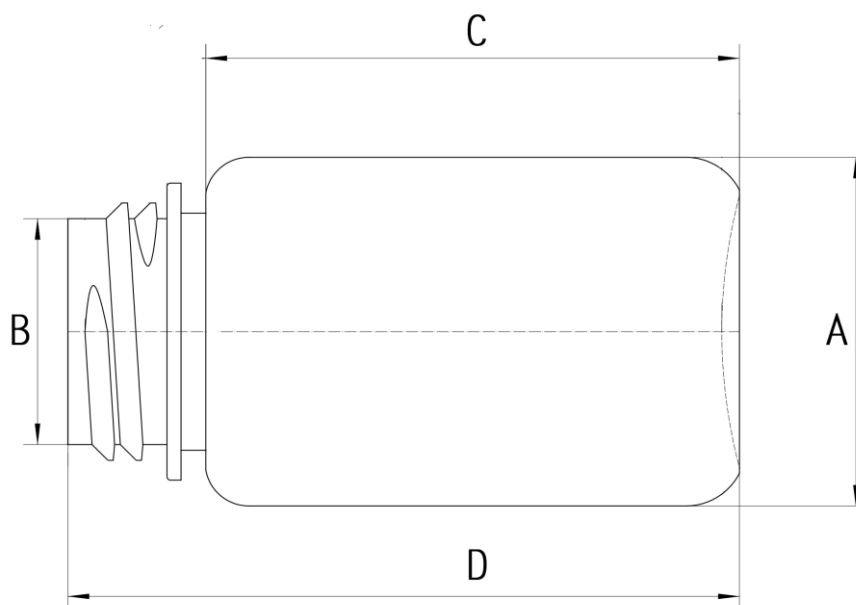
Biologix products are manufactured completely according to the TUV ISO 9001:2008 standard.

### VI. RESTRICTIONS

Refer to the Chemical Resistance Chart in our catalog, and available within our online catalog.

**VII. PRODUCT PARAMETER**

Dimensions=mm



Item	Bottle diameter (mm)				Height (mm)				Height with closure (mm)
	A	Deviation	B	Deviation	C	Deviation	D	Deviation	
04-0010	Φ24.4	±0.3	Φ16.6	±0.2	31.8	±0.4	49.4	±0.4	51.2
04-0030	Φ33.2	±0.3	Φ24.6	±0.2	37.8	±0.4	57.2	±0.4	61.1
04-0060	Φ39.8	±0.4	Φ29.1	±0.2	60.8	±0.5	79.3	±0.5	83.1
04-0125	Φ48.5	±0.5	Φ38.6	±0.2	75.3	±0.8	93.2	±0.8	97.2
04-0250	Φ56.2	±0.6	Φ38.6	±0.3	106.2	±0.8	126.9	±0.8	130.4
04-0500	Φ73.4	±0.8	Φ51.1	±0.3	134.6	±1.0	155.4	±1.0	159.1
04-1010	Φ28.6	±0.3	Φ16.6	±0.3	20.6	±0.3	38.6	±0.3	40.8
04-1030	Φ33	±0.4	Φ24.6	±0.4	38.1	±0.4	52.2	±0.4	60.9
04-1060	Φ39.4	±0.5	Φ28.9	±0.5	60.6	±0.5	79.7	±0.5	82.7
04-1125	Φ48.5	±0.6	Φ38.3	±0.6	75.8	±0.6	95	±0.6	98.8
04-1250	Φ60.6	±0.7	Φ38.8	±0.7	105.8	±0.7	123.8	±0.7	127.2
04-1500	Φ73.4	±0.8	Φ51.1	±0.8	136.5	±0.8	154.8	±0.8	158.3